



Al Khansa  
الخنساء

Collection

2026

# AL KHA NSA

*Al Khansa' A dialogue between desert and stone.  
Between movement and permanence. Rooted in  
Bedouin craftsmanship and shaped by the  
intellectual legacy of Al-Andalus, this collection  
explores womanhood as strength — enduring,  
composed, and unapologetic. Handwoven Sadu  
textiles, architectural silhouettes, and jewelry  
conceived as structure rather than ornament come  
together as a language of memory and identity.  
Al Khansa does not look back in nostalgia. It  
stands — carrying history forward.*

# THE NAME

Named in tribute to the Arab poet Al-Khansa, a woman whose voice was defined not by softness, but by clarity, resilience, and presence. Her poetry did not seek permission. It endured.

حبيب  
في قلبي  
كالنجم  
في السماء

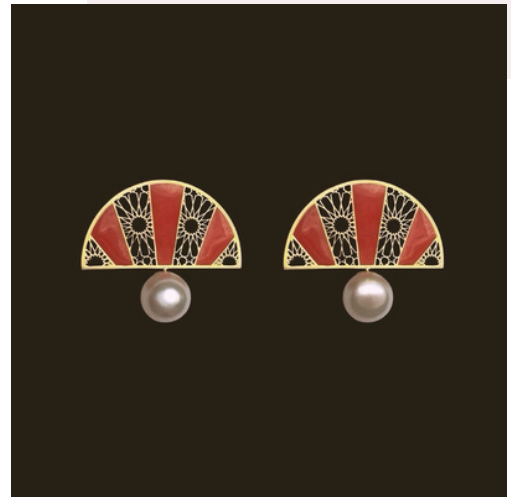
# SAD U

Inspired by the visual language of traditional Bedouin Sadu weaving, the textiles in Al Khansa reinterpret its geometry and rhythm through contemporary production.

Defined by repetition, structure, and strength, Sadu becomes a graphic foundation rather than a decorative element.

# WEARABLE ARCHITECTURE

The jewelry within Al Khansa is conceived as structure rather than ornament. Co-designed with Álvaro Larrosa Furest, each piece draws from Moorish geometry — symmetry, repetition, and proportion — completing the silhouette with precision and intent.



*Herradura earrings* , inspired by the exquisite Herradura arch of the Mosque-Cathedral of Córdoba







حبیب

# AL KHANSA KAFTAN



Structured kaftan crafted from Sadu textile, balancing rigidity and fluidity. The silhouette echoes nomadic movement while asserting architectural presence. A garment shaped by endurance, not decoration.

Belionel Al Khansa' - 2026

فی قلبی



Belionel Al Khansa' - 2026



# TUMADIR



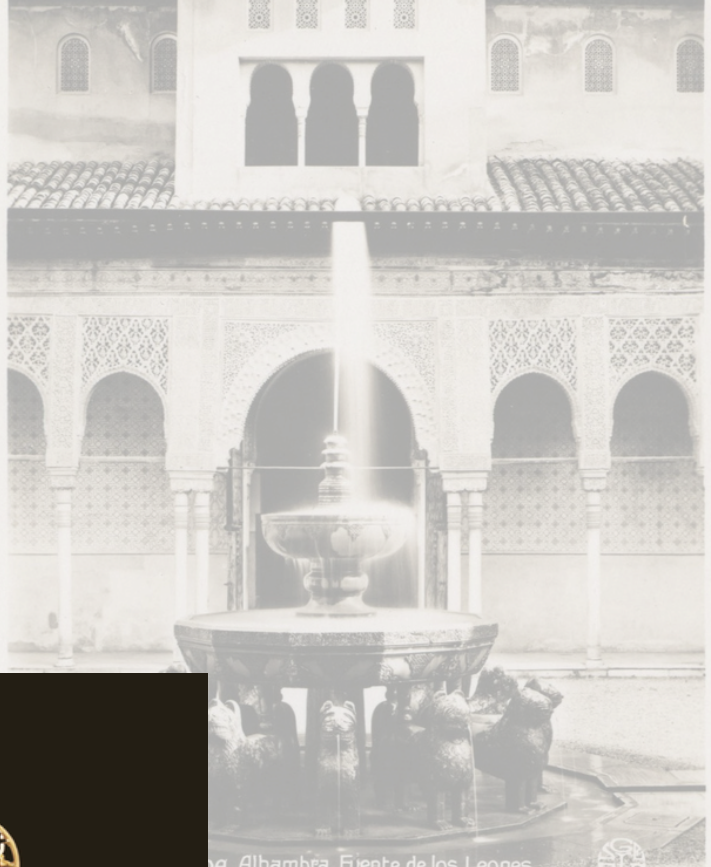
A structured silhouette defined by restraint and proportion. The upper construction draws from the architectural geometry of the Mosque of Córdoba, translating arches and rhythm into form. Bedouin functionality refined through Andalusian discipline.



في قلبي

Belionel Al Khansa' - 2026





## COURT OF THE LIONS – بهو السباع

A sculptural earring inspired by the Court of the Lions at the Alhambra.

Its form translates rhythm, symmetry, and the continuous flow of water into a wearable structure.

An object of guardianship, balance, and quiet power.

Conceived as the central architectural object of Al Khansa, this piece anchors the collection's dialogue between permanence and movement.



Belionel Al Khansa' - 2026



# CLO SING

Al Khansa exists at the intersection of memory and form. A collection shaped by women, carried by history, and articulated through structure. Not a return — but a continuation.

## CREDITS

BELIONEL Creative Direction: Nayla Belkhir  
Jewelry Collaboration: Álvaro Larrosa Furest  
[belionel.com](http://belionel.com)

B e l i o n e l   A l   K h a n s a ' -   2 0 2 6

# KEEP INTO UCH

## S o c i a l s

@ b e l i o n e l o f f i c i a l

@ b e l i o n e l . o f f i c i a l

@ B e l i o n e l

For Inquiries and Information:

i n f o @ b e l i o n e l . c o m

+ 9 7 1 5 4 2 1 5 0 1 9 7

b e l i o n e l . c o m



X

Alvaro Larrosa Furest